

70 TN - XCMG QY70K - 2015

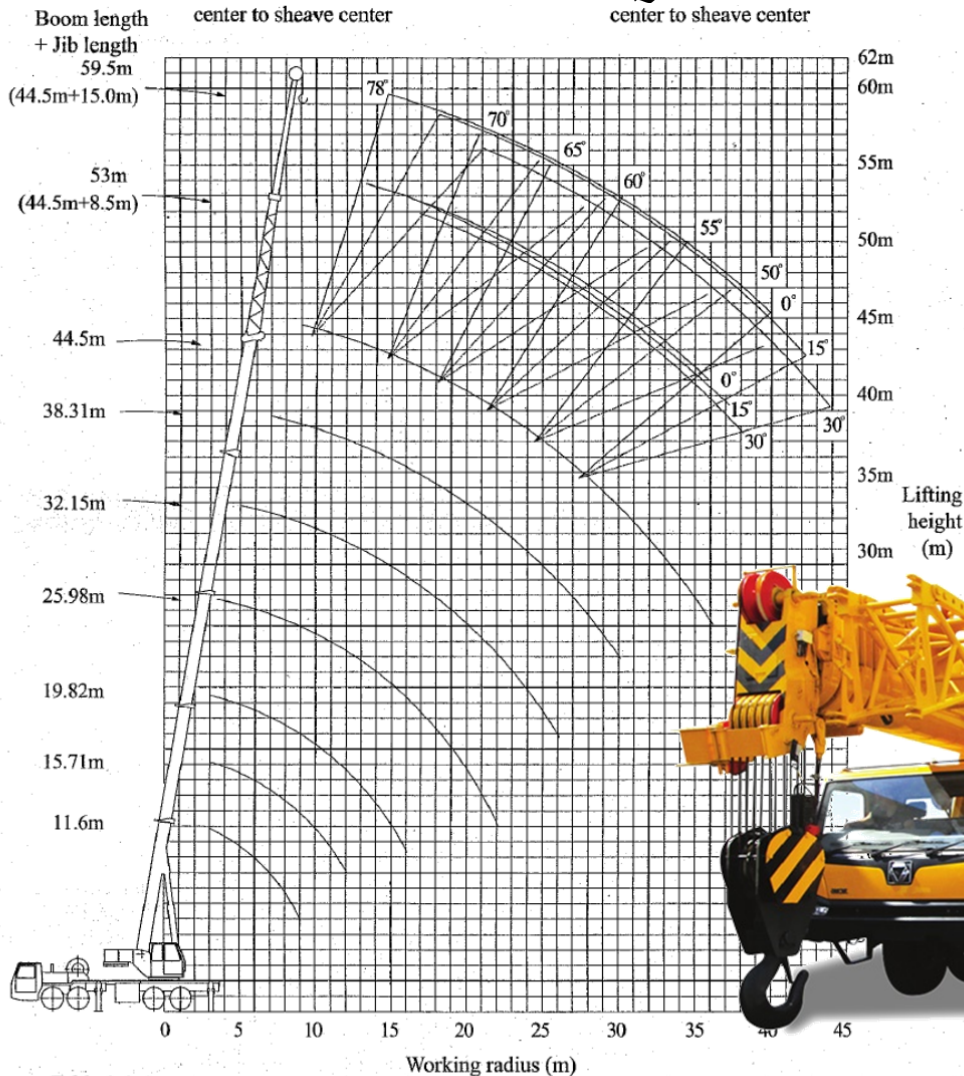


Table 3-3 QY70K-I Total Rated Lifting Load for Boom (on fully-extended outriggers of 7.3m, with counterweight of 4t)

On fully-extended outriggers, without front jack, boom over side or over rear; with front jack down, 360° swing operation

Radius (m)	Base boom 11.6m			Half-extended boom 15.71m			Half-extended boom 19.82m			Half-extended boom 25.98m			Half-extended boom 32.15m			Half-extended boom 44.5m			Fully-extended boom 44.5m				
	Lifting load (kg)	Boom angle (°)	Lifting height (m)	Lifting load (kg)	Boom angle (°)	Lifting height (m)	Lifting load (kg)	Boom angle (°)	Lifting height (m)	Lifting load (kg)	Boom angle (°)	Lifting height (m)	Lifting load (kg)	Boom angle (°)	Lifting height (m)	Lifting load (kg)	Boom angle (°)	Lifting height (m)	Lifting load (kg)	Boom angle (°)	Lifting height (m)		
3	70000	71.5	11.813																				
3.5	63500	68.8	11.584																				
4	54500	66.0	11.325	47500	73.1	15.838	40600	77.2	20.173														
5	47000	60.3	10.709	42600	69.2	15.418	38500	74.2	19.850			79.4	26.313										
6	38500	54.1	9.938	37000	65.1	14.912	34200	71.1	19.467	25500	77.1	26.029											
7	29500	47.3	8.965	28800	60.9	14.311	28500	67.9	19.019			74.8	25.701	18200	79.6	32.222							
8	22500	39.5	7.703	22300	56.4	13.602	22300	64.7	18.503	21500	72.4	25.327	17500	77.7	31.926	14100	80.0	38.339					
9	17800	29.8	5.929	17700	51.7	12.764	17600	61.3	17.911			70.0	24.905	16000	75.8	31.595	14100	78.7	38.065				
10				14400	46.6	11.767	14300	57.8	17.236	15500	67.6	24.432	14500	73.9	31.226	13200	77.2	37.762	9900	79.5	44.224		
12				9700	34.5	9.052	9600	50.4	15.586			62.6	23.321	11500	70.1	30.372	11200	74.0	37.064	9100	76.8	43.632	
14							6800	41.9	13.389	7800	57.2	21.960	8500	66.1	29.350	9000	70.8	36.237	8100	74.1	42.936		
16							4800	31.4	10.301			51.5	20.296	6500	61.9	28.140	6900	67.5	35.373	7200	71.4	42.130	
18										4400		45.3	18.239	5000	57.6	26.717	5400	64.1	34.160	5700	68.5	41.208	
20												38.1	15.624	3900	53.0	25.043	4300	60.5	32.881	4600	65.6	40.161	
22												2400	29.2	12.058	3000	48.0	23.059	3400	56.8	31.415	3700	62.6	38.979
24															2300	42.5	20.671	2700	52.9	29.735	3000	59.6	37.648
26															1700	36.2	17.707	2100	48.8	27.799	2400	56.4	36.153